

The Ultimate Guide

How To Choose A Metal Siding Color



Finishes You've Never Seen Before®



BEFORE WE BEGIN

Prior to choosing your metal wall color, you must have already decided on your:

- Metal Siding Panel Type
- Type of Paint System (SMP or Kynar®)
- Gauge (Thickness) of Steel

Certain panel profiles, paint systems, or gauges are not available in every color, so making these decisions first helps narrow down the options.

FACTORS TO CONSIDER WHEN CHOOSING A METAL SIDING COLOR

- Geographical Location
- Color Trends
- Surrounding Features
- Architectural Style
- Energy Efficiency
- Natural Lighting
- T-8® Plankwall



GEOGRAPHICAL LOCATION

Tropical



Tropical locations tend to incorporate metal siding designs in colors that are bright and radiant to help create a more lively appearance.

Desert And The Plains



Desert and plain locations often use metal siding in warm and earthy tones. It's best to use colors that match the desert sand and terracotta roof tiles.

Mountains And Forest



Homes in mountain and forest areas tend to be in dark and earthy tones that match the natural surroundings.

METAL SIDING COLOR TRENDS



Are you subject to the rules of an HOA? Does your HOA even allow a metal roof?

If you are a part of an HOA, make sure that you verify metal siding panels are allowed and get a list of the approved colors.

Then submit a color chip for approval by the HOA.

What colors are the other walls in your area?

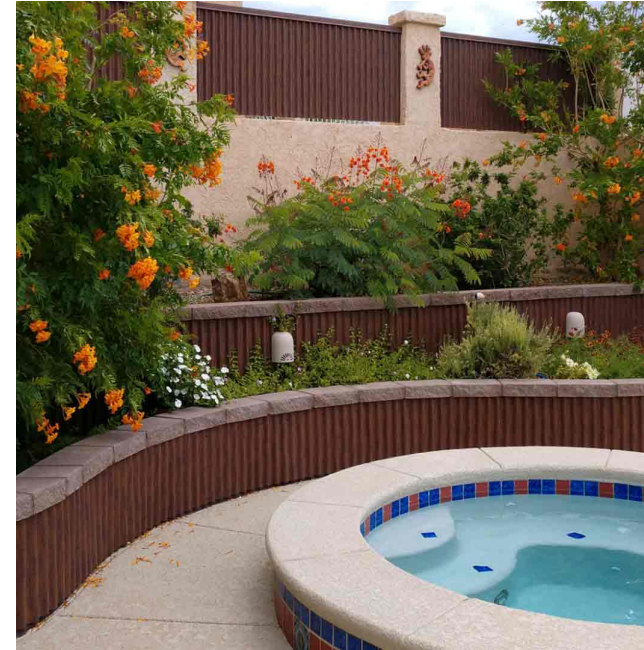
The look of neighborhood homes has a tendency to be consistent. If the buildings in your area are all light earth tones, a light colored wall panel may blend in well. However, if you're looking to stand out, you may want to have a vibrant or darker tone color.



SURROUNDING FEATURES



Compare the metal wall colors to the components around your property. The color of your exterior features and siding panels should complement each other.



Notice Additional Property Features:

- Doors
- Windows
- Landscapes
- Columns
- Railings
- Decorative Pieces



Add A Pop Of Color To Stand Out!

Consider using a wall panel that is a different color than the metal roof or other siding materials to compliment the design.

ARCHITECTURAL STYLE

- MODERN
- FARMHOUSE
- SPANISH



MODERN

**MODERN
ARCHITECTURE HAS
BEEN TRENDING TO
DARK COLORS AND
DARK MATTE
COLORS.**

**Recommended
WSMR Colors:**

Matte Black

Matte Midnight Black

Matte Dark Bronze

Matte Musket Gray

Vintage

Black Ore Matte

Speckled Blackened Rust

Blackened Copper

Weathered Gray Paint Prints

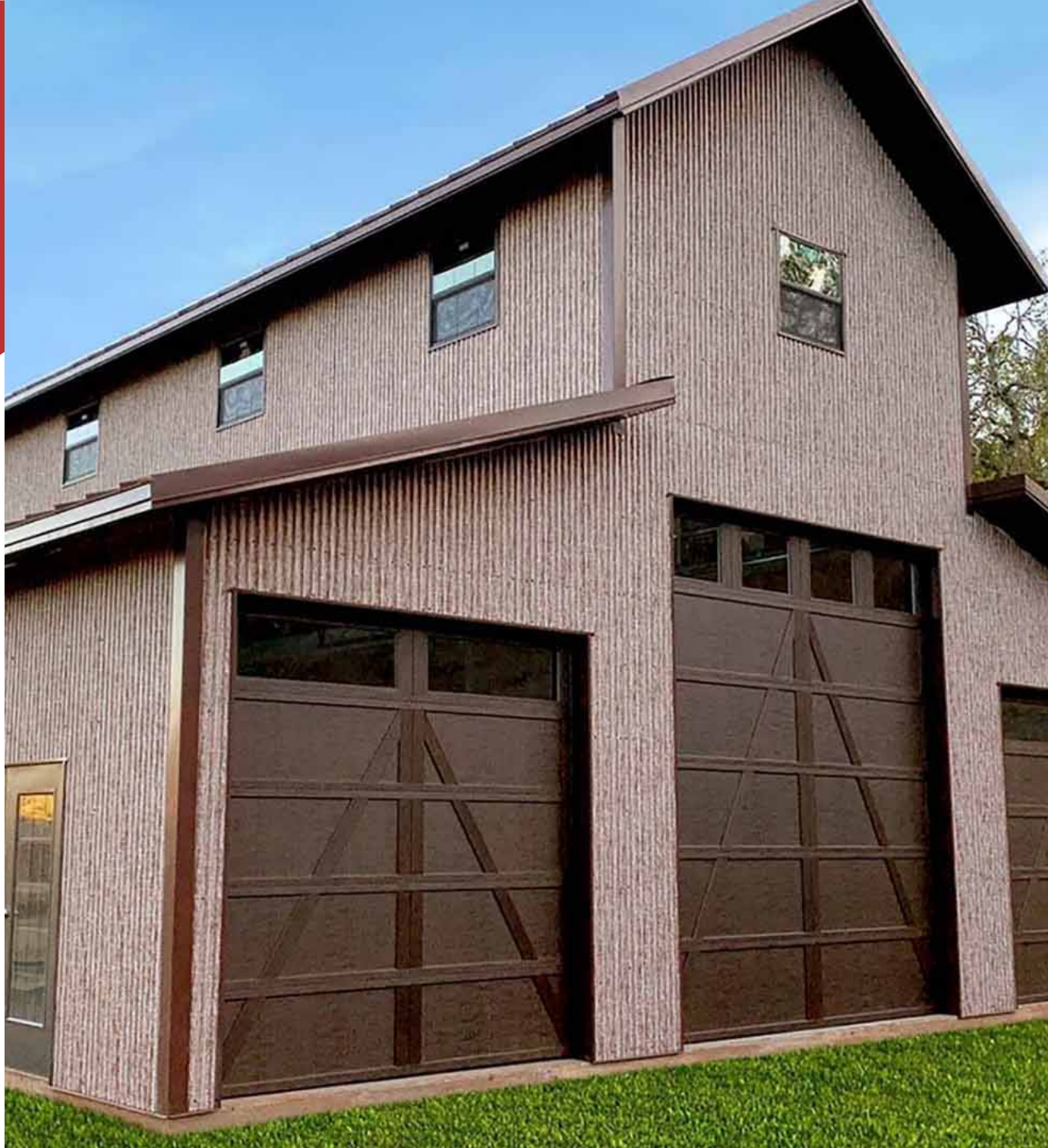


FARMHOUSE

**BARN OR OTHER
FARMHOUSE
ARCHITECTURE
ARE OFTEN REDS,
WHITES, OR
DARK GRAYS.**

Recommended WSMR Colors:

Regal White
Bone White
Almond
Regal Red
Colonial Red
Vintage
Reclaimed Metal Rust



SPANISH

**SPANISH STYLE
ARCHITECTURE
WILL TEND TO
ENHANCE THE
WARM COLOR
PALETTE AND
DECORATIVE
ACCENTS.**

**Recommended
WSMR Colors:**

Corten
Terra Cotta
Colonial Red
Antique Rustic
Weathered Metallic
Copper Brown Patina



ENERGY EFFICIENCY

Homeowners can benefit from energy savings and energy efficient qualities of metal siding panels. Energy savings vary based by color, paint system, and heat reflection coatings. On average, homeowners will have **energy savings of 7-15%**.

Cool metal panels are known to be highly reflective and have high thermal emittance. The energy reflecting away from the roof's surface is referred to as solar reflectivity. The power of a panel to expel heat that it has absorbed is measured by thermal emittance. Metal wall panels in a lighter color will reflect the heat of the sun better than darker colors that absorb more heat.

The best colors to help make your property more energy efficient are Cool Metal Siding Panels. At WSMR, we offer **Vari-Cool®** colors such as Mesa Sunrise, Kaleidoscope, and Copper Brown Patina.



NATURAL LIGHTING



Look at the main features of your house and compare wall panel samples at different times of the day.

The colors will look different depending on the lighting conditions.

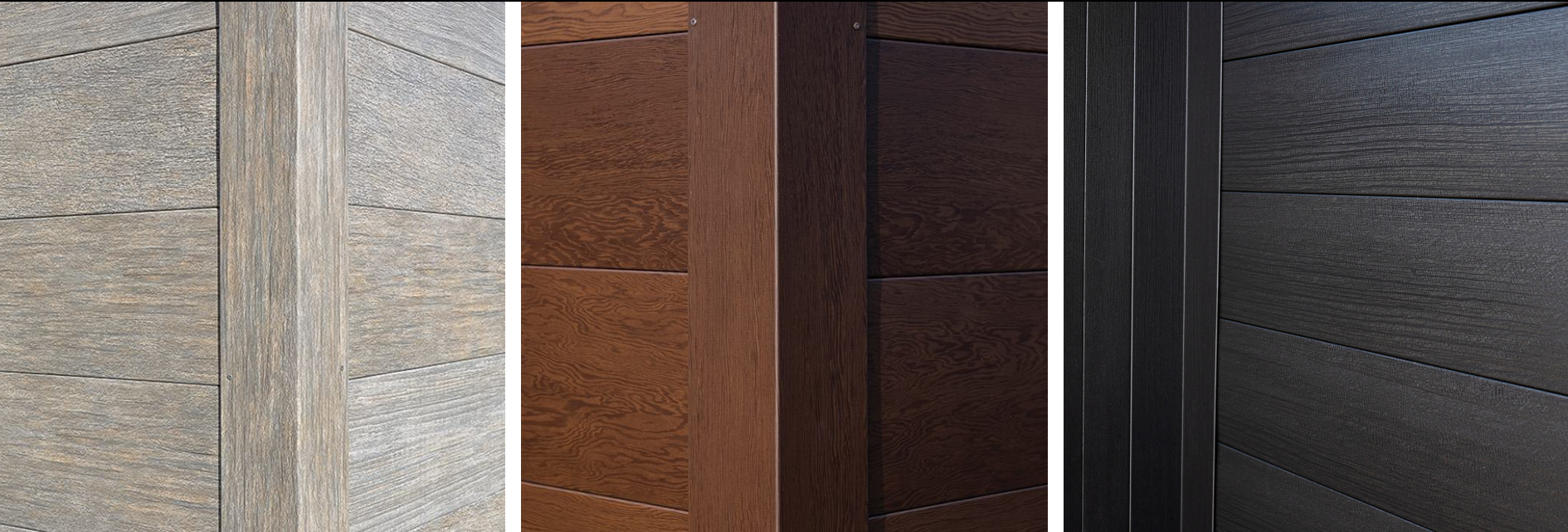
In the middle of the afternoon, you may notice a glare with a glossy color. However, a matte color might look gloomy or dull in the early evening.

For the most accurate idea of what each color will look like, consider all your potential wall colors at different times of the day in various lighting.

T-8® Plankwall

What is T-8® Plankwall? T-8 Plankwall® is a metal siding that is designed to look like wood. It arrives ready - meaning no maintenance like cutting, staining, or painting is required.

- Save Up To 75% In Material Cost When Compared To Real Reclaimed Lumber
- Easy To Install With Concealed Fasteners - Vertical or Horizontal Installation
- No Maintenance - No Need To Stain, Paint, or Seal
- Limited 40 Year Paint Warranty



T-8® Plankwall comes in three distinct colors:

- **DISTRESSED WOOD**
- **WALNUT WOOD**
- **BURNT WOOD**

COLOR SELECTION TOOLS

Color Charts

Color samples grouped together by paint finish.

Photo Galleries

A photo collection of completed projects, generally grouped by color or panel type.

Color Visualizer

An interactive, virtual program that shows a realistic simulation of different roof colors on a project.

Color Chips & Panel Samples

Samples of the color and material.



COLOR CHARTS

The starting point for selecting colors should be a color chart. Color charts normally are grouped by the type of paint finish. Most companies will have different color charts for SMP paint, standard colors in PVDF/Kynar 500®, special order colors, and designer or specialty paint prints.



Color charts allow you to see all of the colors in one place. Having a side by side comparison of the different shades of each color is a great starting point. However, there are limitations to color charts.

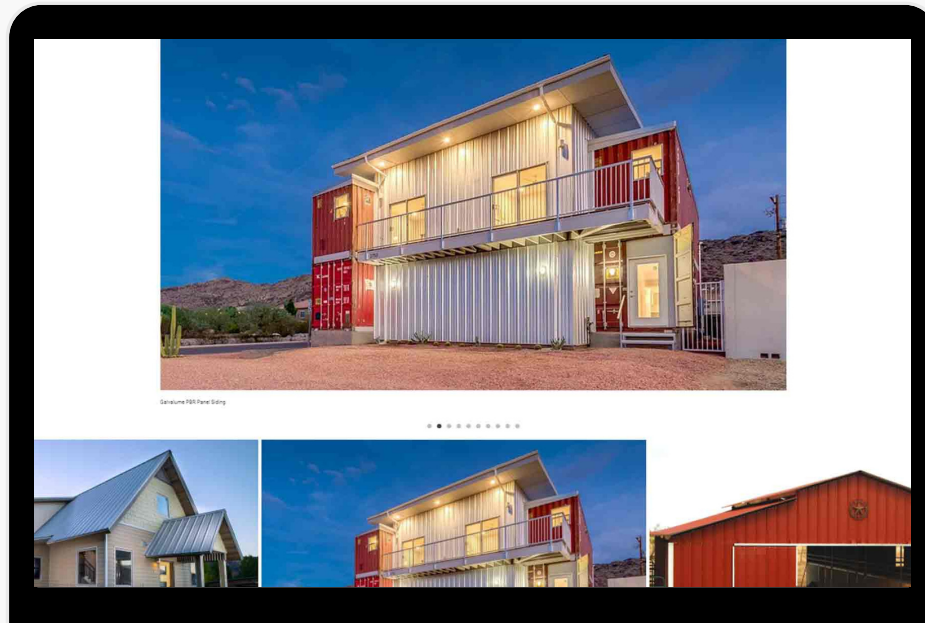
When you view a color chart online you are subject to your monitor settings. The color on your computer screen should only be considered as a fairly close color representation. Sometimes when you see that color in person it may be completely different than what you expected

PHOTO GALLERIES

After you look at a color chart, you will have a good idea of your general color range. The next step is to try and find jobsite photographs of these colors.

Most companies will have a photo gallery on their websites. In many instances, it will be organized by the specific color.

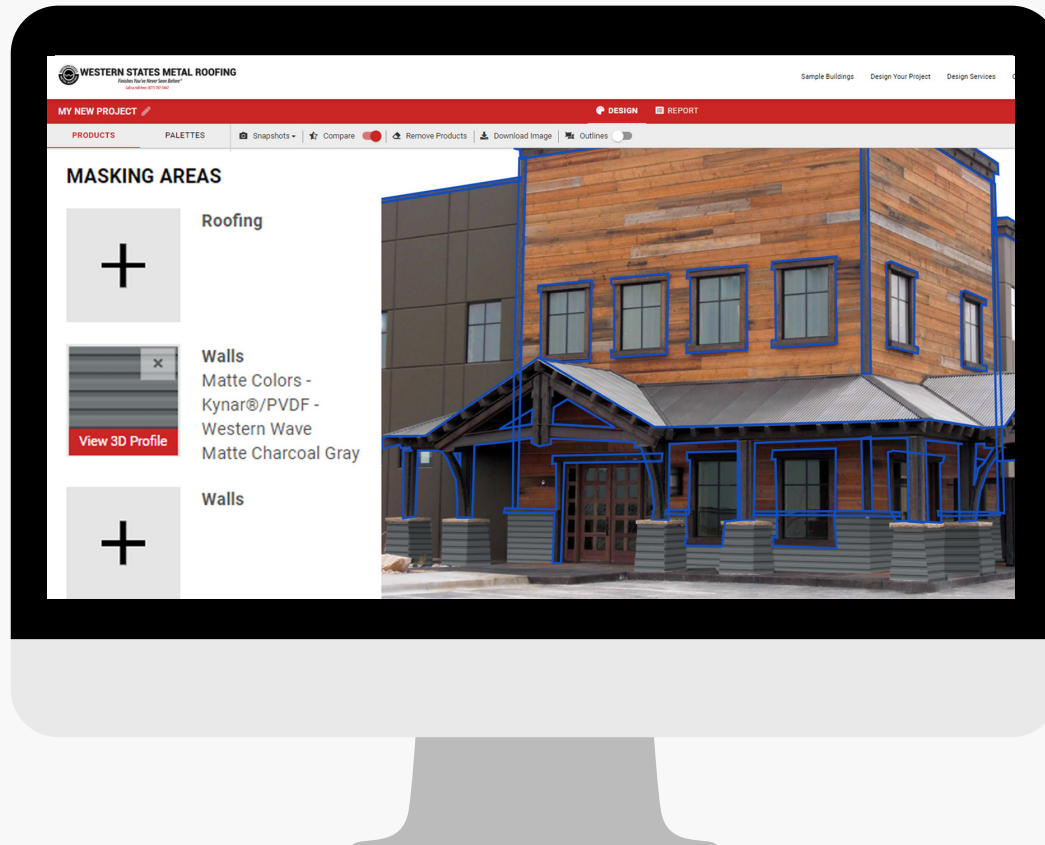
Check out our pictures posted on Facebook, Instagram or on our website. We've posted real metal siding pictures on homes, buildings, restaurants, barns, sheds, and industrial complexes. Proudly displayed are photos taken by contractors from around the United States on jobs they have completed over the years. Photos are used with permission and may be subject to copyright.



PRODUCT VISUALIZERS

Metal Roofing & Siding visualizers allow you to select a specific style of home or upload a photograph of your project.

This can be helpful because you can compare different colors to the structure and even change the surrounding features. You will have the ability to pick the stucco or brick color and then select a metal siding color. This will help see if the colors complement each other and are in balance.



METAL COLOR CHIPS & PANEL SAMPLES



A color chip will actually be cut from the steel that is used to make the metal roofing. It will be the best representation of the color. We recommend that you **request a color chip in your favorite 1-5 colors.**

Once you see these colors in person, trim the list down and **request a panel sample of your favorite 1-2 colors.** Panel samples are much larger. They can be placed on the wall to give you the most realistic vision of how your roof will look.

Availability Of Metal Samples

At Western States Metal Roofing our **sample policy** is:

Metal Color Samples - Free of charge and readily available in all colors. You can request as many colors as you need within reason.

Panel Samples - **Specialty paint prints/designer colors are readily available and free.** These colors have to be seen in person so that you can see the detail and beauty of the paint. **Standard colors are available in white only.** We will also send you a metal color chip in any colors that you need. Normally having a **white panel sample and a metal color chip** in your chosen color is enough to determine whether it's the correct color for your project.



Finishes You've Never Seen Before®

HOW TO CHOOSE THE RIGHT METAL SIDING COLOR GUIDE

CALL FOR A QUOTE OR COLOR CHIP

901. W. Watkins St., Phoenix, AZ 85007 | 877-787-5467 | sales@westernstatesmetalroofing.com
westernstatesmetalroofing.com